

**METRIC**  
IF IN DOUBT ASK

**INSTALLATION KIT.**

PRODUCTION CONTROL TO ENSURE A COPY OF THIS DRAWING IS INCLUDED WITH EACH INSTALLATION KIT.

BECAUSE OF THE MULTIPLICITY OF POTENTIAL APPLICATIONS THE INSTALLATION DETAILS SHOWN ARE SUGGESTIONS ONLY. THE USER SHOULD ENSURE THAT THE DESIGN, METHOD OF ASSEMBLY AND MATERIALS USED ARE SATISFACTORY FOR THE INSTALLATION.

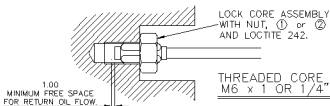
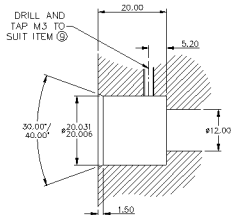
ISS	DATE	DRAWN	ECR No.	CHK	APP
1	19/01/05	DJT	10305/10		

ITEM No.	DESCRIPTION	P+G PART No.	QTY.
1	FULL NUT M6 x 1.00.	X63-072-360	1
2	FULL NUT 1/4"-28 UNF.	X63-111-001	1
3	WAVEY WASHER	X63-112-005	3
4	SHIM WASHER	P202681	1
5	CIRCLIP	X69-005-106	1
6	'O' RING (14 x 2)	X64-194-006	1
7	'O' RING (16 x 2.5)	X64-194-008	1
8	ANTI EXTRUSION RING	X64-074-001	1
9	M3 CONICAL SET SCREW	X63-096-305	1
10	COPY OF AI202799	AI202799	1
11	LABEL (SUPPLIED LOOSE)	P200919	1
12	INSTALLATION KIT LABEL	P203232	1

ITEM 11 LABEL IS SUPPLIED FOR THE CUSTOMER TO RECORD ICT ORDERING CODE AND TO BE FITTED IN VISIBLE LOCATION ADJACENT TO SENSOR FOR RE-ORDERING REFERENCE.

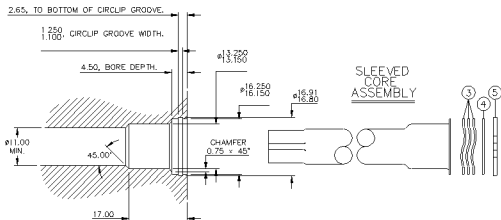
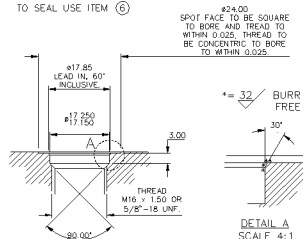
**INTERNAL FLANGE MACHINING DETAILS.**

TO SEAL USE ITEMS ⑦ & ⑧



**THREADED FLANGE MACHINING DETAILS.**

TO SEAL USE ITEM ⑥



SCALE 1:1 UNLESS STATED	IF CONTROL DIMENSIONS (Kc) ARE SPECIFIED THEY ARE TO BE SUBJECT TO TUBE INSPECTION OR STATISTICAL PROCESS CONTROL.	D No <b>ICT080</b>	MATERIAL	TOLERANCES - IN-LINE WITH PENNY & GILES STANDARDS 15-50 SURFACE FINISH VALUES IN MICROMETERS (µm) TO BS154 PT2 TURNES 0.5, MILLED 0.5, GROUNDED 0.5 ALL SCREW THREADS TO BS843 PT2 EXTERNAL CLASS 4g INTERNAL CLASS 4h ANGULAR LINEAR (MACHINING) C/F CL mm +/- 0.5 mm CLD mm +/- 0.2 mm CLSD mm +/- 0.2 mm CLSD mm +/- 0.2 mm UNLESS OTHERWISE STATED	TITLE <b>SUGGESTED ICT080 INSTALLATION DETAILS.</b>
THIRD ANGLE PROJECTION TO BS 8888	FIRST USED ON	REF.	FINISH	BREAK EDGE 0.25 - 0.30 mm FLAT EDGE 0.1 - 0.2 mm	PART NUMBER: <b>AI202799</b>

**PENNY + GILES**

A3

SHT 1 OF 1 SHTS